

find your balance

Yoga Gear

In my yoga practice I want to wear clothing that is non-restrictive and flexible, not too thick or loose. I searched my suppliers for suitable garments and sourced some that have proved to be excellent in quality and durability. I personalised these with designs featuring my favourite images and received frequent requests to sell them, which I now do. I'm always working on new designs to be included in the collection, so if you have something particular in mind, please let me know - I may have something suitable in the pipeline already!



Yoga Capri Pants

Slimline ¾ length
Hidden key pocket in the front
Flat seams for less irritation.

Fabric: 87% Polyester, 13% Spandex. Weight: 280gsm
Size: XS 8, S 10, M 12, L 14, XL 16
Colours: Black/Black, Black/Blue, Black/Pink, Black/Purple



Yoga Long Pants

Slimline full length
Hidden key pocket in the front
Flat seams for less irritation.

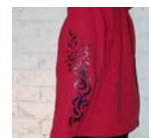
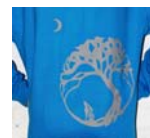
Fabric: 87% Polyester, 13% Spandex. Weight: 280gsm
Size: XS 8, S 10, M 12, L 14, XL 16
Colours: Black/Black, Black/Blue, Black/Pink, Black/Purple



Yoga Hoodie

Kangaroo pouch pocket
Hidden earphone loops
Double fabric hood with contrast inner

Fabric: 80% Cotton, 20% Polyester. Weight: 280gsm
Size: XS 34", S 36", M 40", L 44", XL 48", 2XL 52", 3XL 56", 4XL 60", 5XL 64"
Colours: 43 options including: Black/Red, Pink/Navy, Sapphire/Grey, Navy/Light Pink, White/Navy, Red/Black, Burgundy/Gold, Yellow/Red, Grey/Navy (Please ask for other options)



Womens's Premium Cotton RS T-shirt

Taped neck and shoulders, stylish tapered fit/side seams
No top stitching

Fabric: 100% Cotton, Ringspun pre-shrunk jersey knit.
Size: S 6-8, M 10-12, L 14-16, XL 18-20, 2XL 22-24
Weight: White 180gsm, Colours 185gsm

Colours: Dark Pink, Light Pink, Black, Yellow, Light Blue, Navy, Red, Royal Blue, Sport Grey, Sapphire Blue, White

